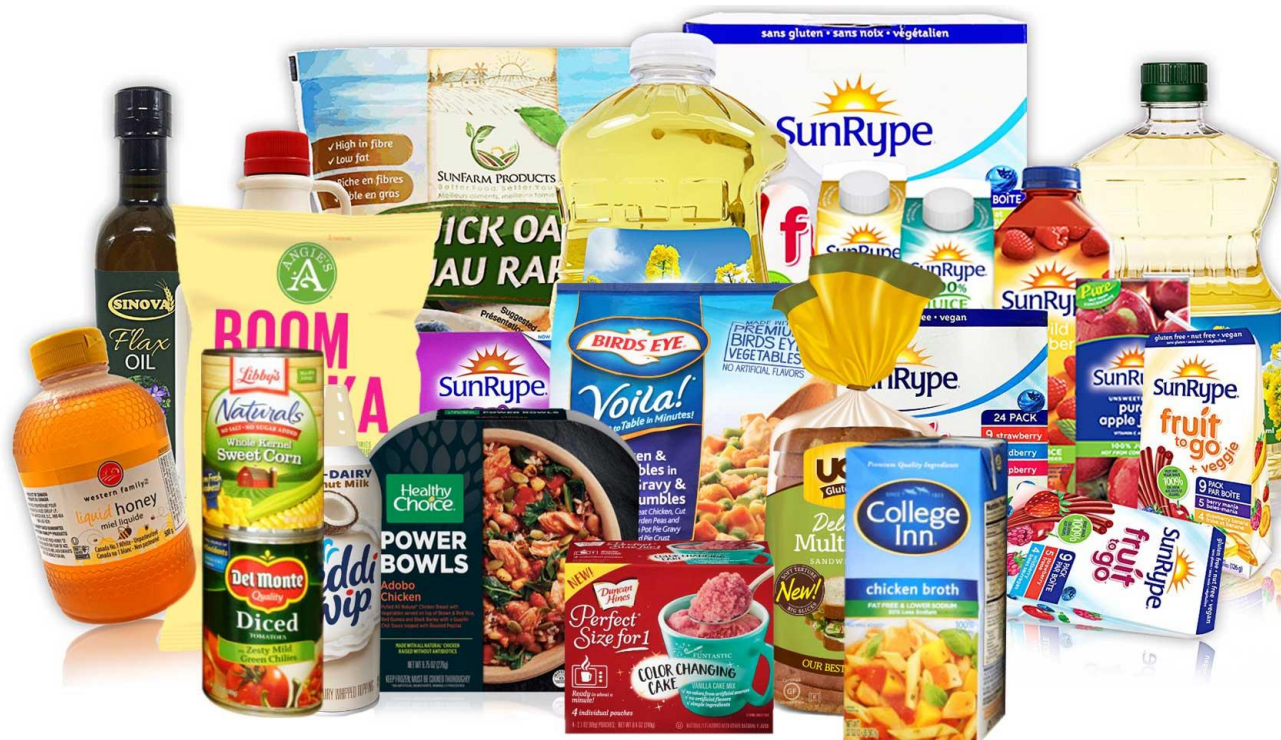


A Leading American packaged foods company



Project: Integrator Application

The Business Challenge

- Integrating the Material and Product Specification system from acquired packaged foods brands
 - Integrating the Material and Product specification systems took too long
 - Many overlapping ingredients get used in Source and Target systems with minor differences. Details are scattered across applications.
- Historically, Source systems data was entered/edited manually causing errors.
- Searching for the right data and documents was time consuming.
- Large number of resources needed.

Benefits of eQube DaaS platform

- Rapid development of an 'eQ Integrator' App to address these challenge.
- Material and Product Specification system Integration time reduced by 75%
 - Target system 1: Oracle Agile PLM for Process - Ingredients, Formulations, Trade Specs, Packaging, Master Recipe etc.
 - Target system 2: SAP ECC6 - Ingredients, Packaging, Master Recipe etc.
- Internal resource needs reduced by 50%, lowering the overall costs.
- Data and documents are presented to cleansers without searching.
- Appropriate data elements automatically created in Oracle Agile and in SAP using transformation rules.
- 1st Phase go live in 3 months from project kickoff.

Features

- eQ Integrator App enabled data enrichment and cleansing through user friendly UI
 - Intermediate data cache was created to reconcile differences between source systems with Oracle Agile PLM and for data enrichment.
- Creates various types of specifications in Oracle Agile for Process and SAP - Ingredients, Formulations, Trade Specs, Packaging, Master Recipe etc.
- At a glance comparison between existing and incoming specs - including extended attributes such as chemical and physical properties.
- In built verifications to enforce PLM processes (e.g. mandatory attributes, LOVs from PLM etc.).
- Same eQ Integrator App can be re-used for new acquisitions by changing eQube-TM maps with minimal changes to the App.

eQ Process

- eQ Products used: eQube-BI, eQube-ADA, eQube-TM, and eQube-MI.
- eQube Connectors used: Oracle Agile PLM for Process, SAP ECC6, Databases, Excel, and files.
- eQ Integrator - For-purpose-App built using eQube-API gateway and eQube UI services.
- ADA (augmented data analytics) analysis sorts data based on semantic similarities into match/no-match buckets.
- Review, resolve, verify and commit approach.
- Most-used and high-impacting specs were prioritized for migration.

